

**Convactor Heater**  
**Model: SCH5**



Issue 2      September 2004

**THESE INSTRUCTIONS SHOULD BE READ CAREFULLY AND RETAINED FOR FUTURE REFERENCE**

### IMPORTANT SAFETY ADVICE

- Do not cover the appliance
- Always ensure that the air inlet grille beneath the heater is free from obstructions. Curtains, soft furnishings and materials should not be allowed to come in contact with the appliance, as this could cause overheating and a fire risk
- This appliance must not be used in a bathroom
- Do not use this heater in the immediate surroundings of a bath, shower or swimming pool
- This heater must not be located immediately below a fixed socket outlet
- This appliance must be earthed
- Do not operate the heater without the cover attached

### Electrical Connection

This heater must be used on an A.C. ~ supply only and the voltage marked on the heater must correspond to the supply voltage.

To comply with the I.E.E. Wiring Regulations, the appliance must be earthed; the supply circuit must be adequate for the input of the appliance, and the circuit protected by a suitable fuse. This appliance has a loading of 500 Watts.

If the heater is to be connected to a fixed electricity supply, a suitable termination must be provided adjacent to the final position of the appliance. In this instance, such a termination can be a double pole switch with a contact separation of at least 3mm in all poles.

The SCH5 if converted to floor standing by adding feet must also be fitted with a rewirable UK 3 pin plug incorporating a 13 amp fuse. The 13 amp fuse must be approved by ASTA to BS1362.

The wires in the mains lead are coloured in accordance with the following code:

**Green and Yellow – Earth**  
**Blue – Neutral**  
**Brown – Live**

### General

The Dimplex SCH5 Convactor heater is primarily designed for wall mounting. Feet are, however, available (Part no. CH9101) and enable the heater to be converted to floor standing units if required.

The heater is designed either for individual operation, or if wall mounted, may be connected together in multiples with a connector kit (Part no.CH0471)

As supplied the Dimplex SCH5 convactor heater does not have any controls. Your electrical supplier will be able to advise on timeswitch or thermostatic controls which would be suitable where multiple installations are involved.

### Safety

For your safety, this appliance is fitted with a thermal cut out. In the event that the product overheats, the cut out switches the heater off automatically.

To bring the heater back in to operation, remove the cause of overheating, then switch off the electrical supply to the heater for a few minutes.

When the heater has cooled sufficiently, switch the heater on.

### Dimensions

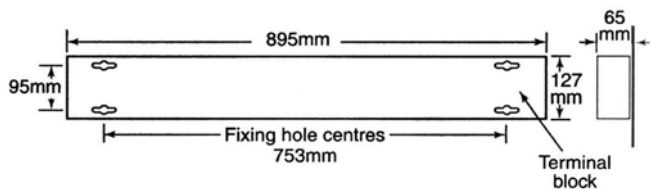


Fig.1

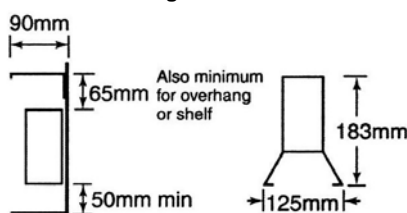
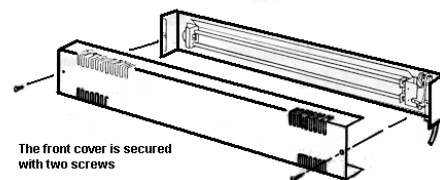


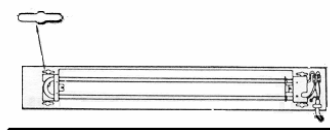
Fig.2

### Wall mounting (singly) (Please refer to Fig.1 and 2)



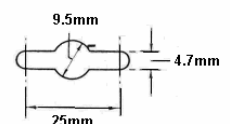
The front cover is secured with two screws

Slotted fixing holes



Heater must be horizontal with the supply cable at the right hand end

Fixing hole size



Recommended screw size: No.8

## Wall mounting (multiple) (Please refer to Fig.1 and 2)

Mains cable entry can be into either of the end heaters of a multiple installation.



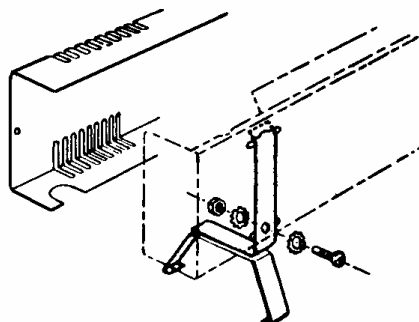
The current rating of any multiple installation must not exceed 13 Amps. The flexible cable supplied with the heater is suitable for a current rating of 6 Amps only.

For every connection between adjacent heaters, a connector kit (Part no.CH0471) is required. It is also necessary to remove the knockouts from butting end plates to take the screwed bush and link wires

Front cover removal and mounting heights are as for single heaters

## Freestanding

When not wall mounted, the heater must be fitted with feet (Part no. CH9101)



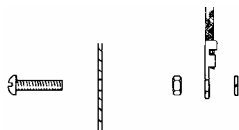
The cable entry must always be at the bottom right hand end of the heater

## Connector kit CH0471

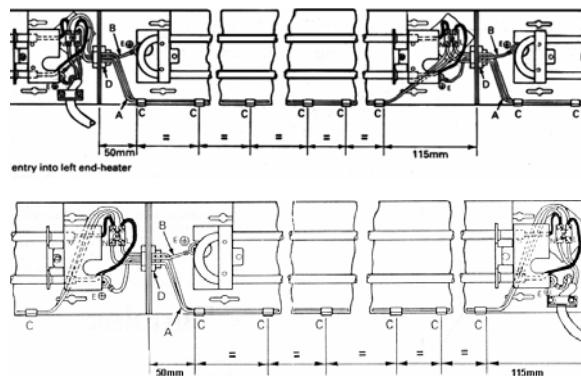
A connector kit comprises:

- (A) Two lengths of heat resistant wire (brown)
- (B) One earth bonding lead (green)
- (C) Six wire securing clips
- (D) One threaded bush and nut
- (E) One auxiliary Earth terminal consisting of a screw, a bonding washer, a coil washer, and two nuts.
- (F) One Terminal block and mounting pad.
- (G) One length of wire (pink) and flag crimp.

Detail of auxiliary Earth terminal (E)



## Connector kit cable entry



## Cleaning

To maintain the external appearance of the heater it need only be wiped over occasionally with a dry duster. A damp cloth may be used but the heater should be off and completely cold. Do not use abrasive cleaning powders or polish.

Periodically, any dust which may have accumulated on the element and terminals should be removed. To gain access, first disconnect the appliance from the electricity supply, and then remove the front cover.

## After sales service

Your Dimplex convector heater is guaranteed for one year from the date of purchase. We undertake to repair or exchange free of charge within this period, any part found to be defective due to a manufacturing fault.

Should you require after sales service, please get in touch with the supplier from whom you purchased the product or contact Dimplex customer service. Please do not initially return a faulty product or part of a product to us as this may result in transit damage and/or a delay in providing service. If the supply cord is damaged, it must be replaced by a special cord or assembly available from the manufacturer or service agent.

Let us know your difficulty, quoting the details shown on the rating label; we will then take the appropriate action.

**CE** This product complies with the European Safety Standard EN60335-2-30, and European Standards EN55014, EN60555-2 and EN60555-3 for Electromagnetic Compatibility. These standards cover the requirements of the EEC Directives 73/23 and 89/336.

Glen Dimplex UK Ltd.  
Millbrook House  
Grange Drive  
Hedge End  
Southampton  
SO30 2DF

UK customer helpline (8.00AM-6.00PM Mon.-Fri; 8.30AM-1.00PM Sat.)

Customer Services: Tel. 0870 727 0101  
Fax. 0870 727 0102  
E-mail. [customer.services@glendimplex.com](mailto:customer.services@glendimplex.com)

Republic of Ireland Tel. 01 8424833

[c] Glen Dimplex UK Limited

All rights reserved. Material contained in this publication may not be reproduced in whole or in part, without prior permission in writing of Glen Dimplex UK Limited.