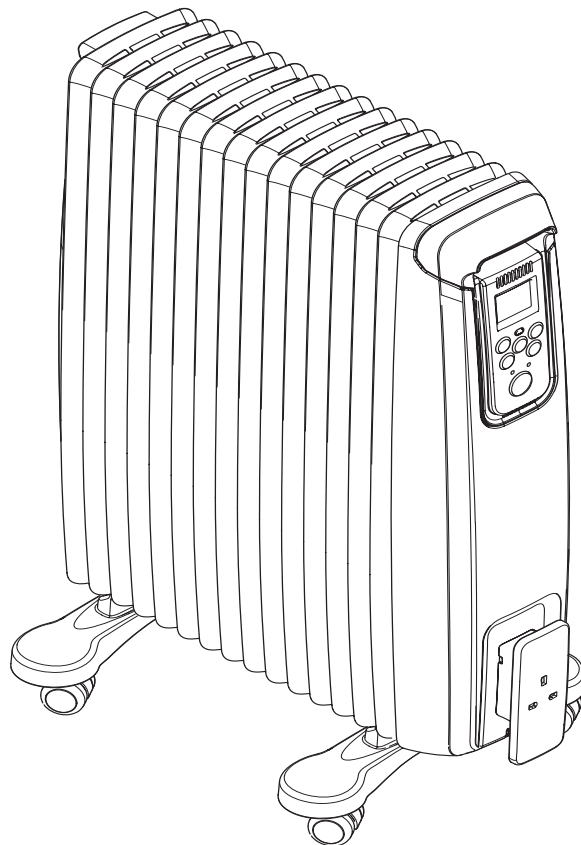


# Dimplex




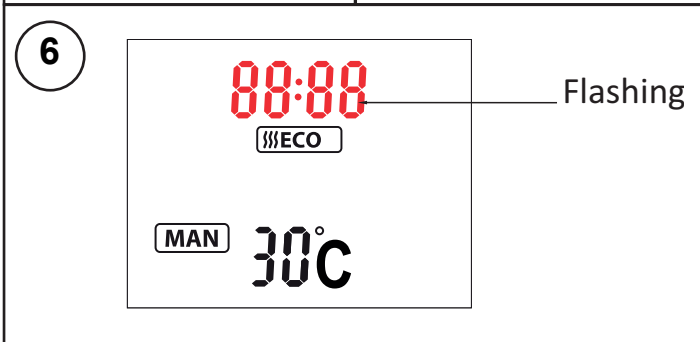
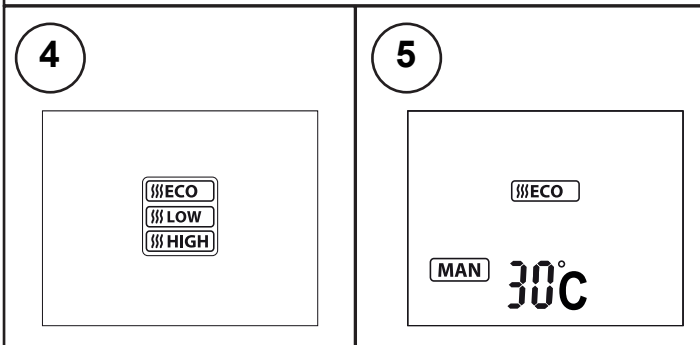
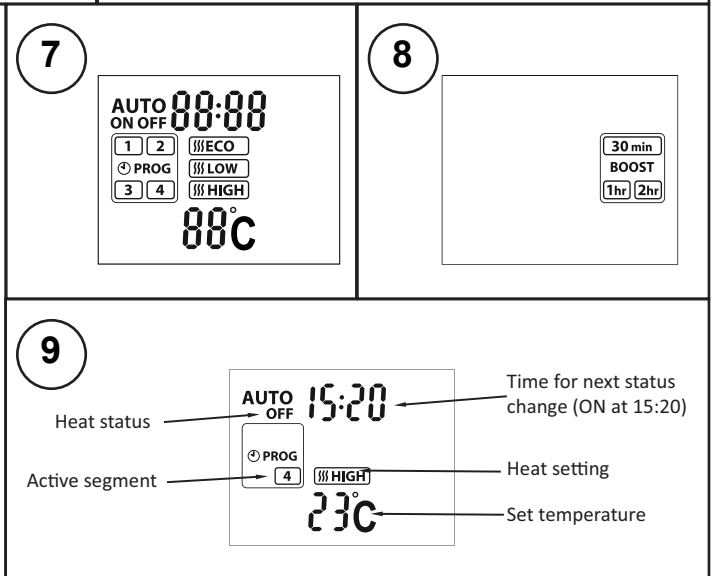
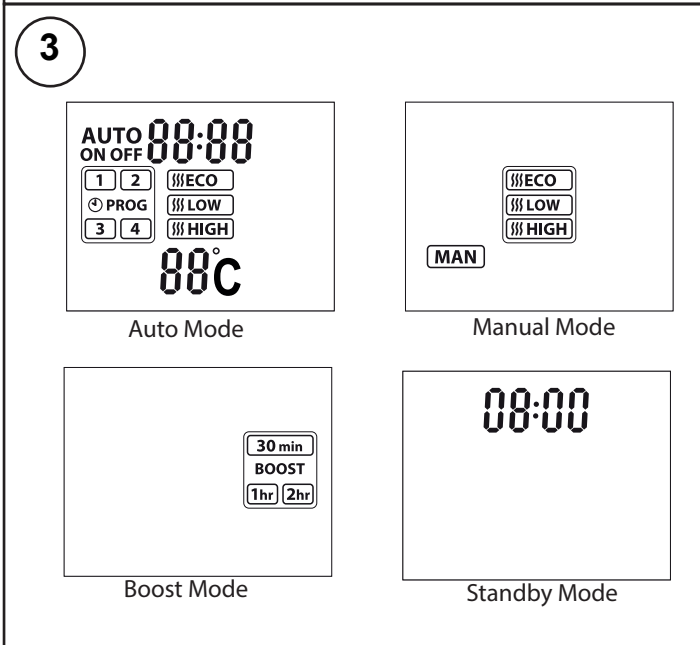
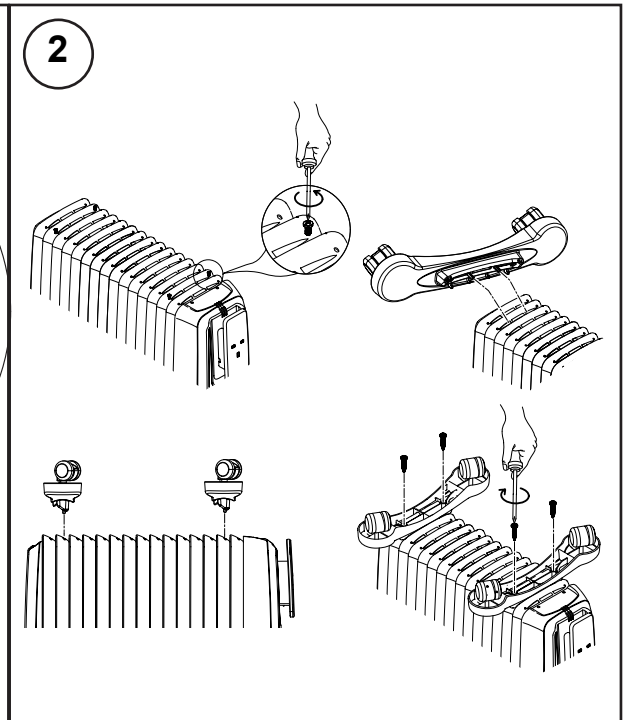
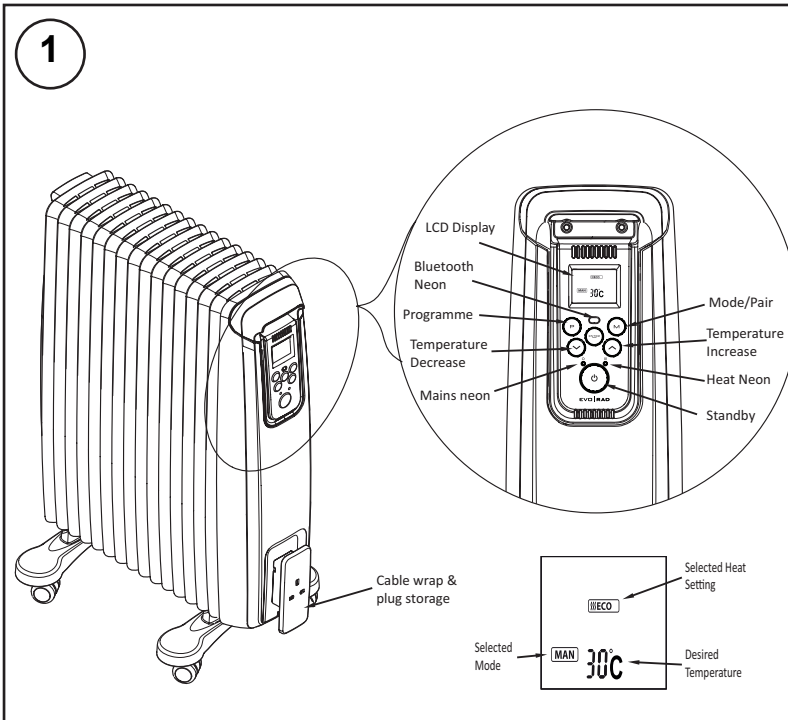
EvoRad2BT & EvoRad2BTA

## EVO | RAD

**THESE INSTRUCTIONS SHOULD BE READ CAREFULLY AND RETAINED FOR FUTURE REFERENCE**  
**As with all portable heating appliances - This product is only suitable for well insulated spaces or occasional use**

08/53302/0 (UK) Issue 5

 The product complies with the European Safety Standards EN60335:2-30 and the European Standard Electromagnetic Compatibility (EMC) EN55014:1, EN55014:2, EN61000:3-2 and EN61000:3-3 which cover the essential requirements of EMC Directive 2014/30/EU and the LVD Directive 2014/35/EU.



<b>Model Identifier(s):</b>	EvoRad2BT	EvoRad2BTA	
<b>Heat output</b>			
Nominal heat output	P <sub>nom</sub>	2.0	2.0 kW
Minimum heat output (indicative)	P <sub>min</sub>	0.8	0.8 kW
Maximum continuous heat output	P <sub>max,c</sub>	2.0	2.0 kW
<b>Auxiliary electricity Consumption</b>			
At nominal heat output	e <sub>lmax</sub>	0.0	0.0 kW
At minimum heat output	e <sub>lmin</sub>	0.0	0.0 kW
In standby mode	e <sub>ISB</sub>	0.0005	0.0005 kW
<b>Type of heat output/ room temperature control</b>			
With electronic room temperature control plus day timer			Yes
Contact details	GDHV, Milbrook House, Grange Drive, Hedge End, Southampton, SO30 2DF		

## Important Safety Advice

**IMPORTANT:** If the appliance is damaged, check immediately with the supplier before installation and operation.

This appliance can be used by children aged from 8 years and above and persons with reduced physical, sensory or mental capabilities or lack of experience or knowledge if they have been given supervision or instruction concerning the use of the appliance in a safe way and understand the hazards involved. Children shall not play with the appliance. Cleaning and user maintenance shall not be made by children without supervision.

Children of less than 3 years should be kept away unless continuously supervised. Children aged from 3 years and less than 8 years shall only switch on/off the appliance provided that it has been placed or installed in its intended normal operating position and they have been given supervision or instruction concerning the use of the appliance in a safe way and understand the hazards involved. Children aged from 3 years and less than 8 years shall not plug in, regulate and clean the appliance or perform user maintenance.

**CAUTION:** Some parts of this product can become very hot and cause burns. Particular attention has to be given where children and vulnerable people are present.



This heater carries the warning symbol indicating that it must not be covered.

**DO NOT** use the heater in the immediate surroundings of a bath, a shower or a swimming pool.

**WARNING:** This heater must not be used in a bathroom.

**DO NOT** place the heater directly below a fixed socket outlet.

**WARNING:** In order to avoid overheating, do not cover the heater.

We recommend that you open a window to ventilate the room when using the heater for the first time.

Unplug the heater when not required for long periods.

**IMPORTANT:** If the mains lead of this appliance is damaged, it must be replaced by the manufacturer or its service agent or a similarly qualified person in order to avoid a hazard.

**DO NOT** use the heater where gas, petrol, paint or other inflammable goods are used or stored.

**Warning:** The heater complies with stringent safety standards but to ensure efficient operation **SURFACES OF THE HEATER WILL BECOME HOT AND CONTACT WITH THESE AREAS SHOULD BE AVOIDED**, particularly between the fins on the top and sides.

The heater is designed for operation on an AC electricity supply, and is suitable for use in domestic dwellings and similar indoor locations.

Always ensure that the appliance is stood on a firm, level base near to, but not directly beneath, a suitable fixed socket outlet.

The heater is fitted with castors and a handle for ease of movement.

It is supplied with a cord and plug ready for use. The supply cord should be uncoiled before use (see 'Storage').

**DO NOT** pull the heater along by the mains lead.

## Fitting the Foot & Castor Assemblies (Refer to Fig.2)

**WARNING: DO NOT OPERATE THE HEATER WITHOUT THE TWO FOOT & CASTOR ASSEMBLIES SECURELY FITTED.**

**WARNING: THE HEATER IS HEAVY, TAKE CARE WHEN LIFTING AND ENSURE THAT IT IS WELL SUPPORTED DURING ASSEMBLY AND USE TO PREVENT IT FROM TOPPLING OVER CAUSING INJURY OR DAMAGE.**

1. Remove the box containing the foot & castor assemblies from the product packaging.
2. Carefully turn the heater upside down supporting it on a soft surface (to avoid damage), request the assistance of a second person if required.
3. Remove the first set of foot fixing screws from the bottom of the fins identified by a label and set aside carefully. Line up the first foot as indicated in **fig.2** and press it down into position, drop the two foot fixing screws into the two screw bosses and tighten each one fully with your screw driver.
4. Repeat the above process (3) for the second set of fixing screws on the second fin indicated by a label. Once completed do a final check to ensure that both feet are secured properly.
5. Lift and turn the heater upright again (with assistance if required) and stand it on its castors as shown in fig.1, it is now ready for use.

## Electrical

### WARNING – THIS APPLIANCE MUST BE EARTHED

If the socket outlets in your home are not of the 13 amp BS1363 type they will not accept the plug connected to this heater, therefore cut off the plug. When cut off this plug can constitute a shock hazard if inserted into a socket outlet. It must therefore be disposed of safely.

Before wiring the appropriate plug please note that the wires in this mains lead are coloured in accordance with the following code:

<b>GREEN/YELLOW:</b>	<b>EARTH</b>
<b>BLUE:</b>	<b>NEUTRAL</b>
<b>BROWN:</b>	<b>LIVE</b>

Connect the Green/Yellow wire to the terminal marked E or the earth symbol or coloured Green or Green/Yellow.

Connect the Brown wire to the terminal marked L or coloured Red.

Connect the Blue wire to the terminal marked N or coloured Black. **DO NOT** connect the Brown (Live) or the Blue (Neutral) wires to the Earth terminal of your 13 amp plug. If the terminals of the plug are unmarked or you are in any doubt, consult a qualified electrician.

## Positioning the Heater

Select the position for the heater ensuring there is clearance from any furniture and fittings of at least 300mm above the heater and 150mm each side. The heater should only be operated on a flat stable surface.

## Operational modes

The electronic control has four control modes: **AUTO**, **MANUAL**, **BOOST** and **STANDBY** mode (see Fig. 3)

In both **MANUAL** and **AUTO** mode there are three heat settings options (see Fig. 4):

**‘Intelligent’ Eco Mode** - The product will automatically regulate the room temperature accordingly. In this mode the product operates at full power, however the output of the product is automatically reduced and regulated as the room temperature approaches the desired level. This mode optimises energy use by calculating the most efficient and effective way to achieve the desired temperature setting. The desired room temperature can be adjusted at any time during operation by pressing the appropriate key.

**Low Heat** - In this option, the appliance will operate at a low heat setting, the appliance will automatically cycle at this setting to maintain the room temperature setting.

**High Heat** - In this option, the appliance will operate at a high heat setting, the appliance will automatically cycle at this setting to maintain the room temperature setting.

Press the Mode key, 'M', to toggle through the modes and the **ENTER** key to confirm the mode selection. Note: when selecting the mode if the **ENTER** key is not pressed, after 5 seconds the heater will activate the mode shown on the LCD display.

## Initial Operation

When the heater is initially connected to the mains the heater will power up in **MANUAL** mode with a set temperature of 30°C. The **Mains** and **Heat** indication neon will be lit and the LCD display will be as per Fig.5. For subsequent operations the unit will power up in its previous state, i.e. if it was in the boost mode when the unit was plugged out when power is reinstated it will resume in boost mode.

## Setting the Time

To set the time press and hold 'P' for two seconds, the time digits will begin flashing (see Fig. 6). Press the '∧' or '∨' buttons to set the time and press **ENTER** to confirm. The heater will revert to the previous operational mode.

## Standby Mode

With the heater **ON**, if the ⏻ button is pressed, the heater will go into standby mode; the heater switches off, the LCD will display the current set time, only the mains neon remains illuminated. On pressing the ⏻ button again the heater will come on in Manual mode and with a set point setting of 25 °C.

## Manual Operation

Repeatedly press the 'M' button until the manual mode is visible on the LCD and confirm the mode selection by pressing **ENTER**. Use the arrow keys to select the desired heat setting (see **Operational modes** for heat setting details) and confirm the selection by pressing the **ENTER** key. The desired temperature can be adjusted at any point during the Manual mode operation, see **Setting the Desired temperature**.

## Auto mode Operation

Repeatedly press the 'M' button until the Auto mode is visible on the LCD (see **Fig.7**) and confirm the mode selection by pressing **ENTER**. The heater will operate as per the pre-programmed time and temperature profile (see - Setting the Timer Profile).

*Note:* if no timer profile has been set it will not be possible to select 'Auto' mode, it is necessary to set up a time program before Auto mode can be selected.

During Auto mode operation the LCD display will show the current heat status, the active programme segment, the time for the next status change, the heat setting and the set temperature (see **Fig.9**).

## Boost mode Operation

Repeatedly press the 'M' button until the Boost mode is visible on the LCD (see **Fig.8**) and confirm the mode selection by pressing **ENTER**. Once the boost mode is activated it will be necessary select the boost period, there are three periods available to choose from, 30 minutes, 1 hour and 2 hours. Use the arrow keys to select the desired boost period and confirm the selection using the **ENTER** key. The default heat setting is ECO mode and the set temperature is 25°C. The set temperature can be adjusted if desired, see **Setting the Desired temperature**. When the boost mode is active the LCD display will show the boost mode, timer period selected and the desired set temperature. The time display will toggle between the current time and time remaining for the selected boost period.

## Frost protection mode

The appliance has a frost protection mode. This setting is useful in areas such as garages to assist in the prevention of frost damage. In Manual mode, if the thermostat is set to its minimum setting '5°C', the heater will cycle ON and OFF to maintain a temperature of approximately 5°C and help protect against frosty conditions. The frost protection symbol ❄ will be displayed on the LCD display when frost protection mode is activated.

## Indicator Neons

**Mains On Neon:** The mains neon, (see **Fig. 1**), remains illuminated when the power is supplied to the product. Note: This does not indicate whether the heating elements are on.

**Heat Neon:** Heat neon remains on when the heating element is active. Once the desired temperature is reached and the element turns off, the heat neon will indicate this by remaining off.

**Bluetooth Neon:** The Bluetooth neon will remain illuminated while successfully paired to another device.

## Setting the Desired Temperature

The desired temperature can be set using the '▲' or '▼' keys. The temperature can be set from 5°C to 30°C and this will be shown on the display. When the temperature is reached the heater will automatically switch OFF. If the ambient temperature drops the heater will come on again automatically.

## Setting the Timer Programmes

There are four program segments available, **P1**, **P2**, **P3** and **P4**. For each segment it is possible to set a desired 'On' time, 'Off' time, Heat mode and set temperature. It is not necessary to set all four segments if not required. The default setting is for all segments to be Off. To turn off a pre-programmed segment it is necessary to set both the 'On' time and the 'Off' time to 00:00. In order to set up a time/temperature profile the following steps must be completed:

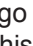
1. To activate the programming screen press the 'P' key. The program settings screen for **P1** will be displayed and the time will be flashing. This flashing time is the 'On' time for **P1** and can be adjusted using arrow keys. Once the desired 'On' time has been set press the **ENTER** key to confirm the time.
2. Select a heat setting using the arrow keys and confirm the selection using the **ENTER** key.
3. Set the desired temperature using the arrow keys and confirm the setting using the **ENTER** key.
4. The 'Off' time must then be set by using the arrow keys, it is necessary to then press the **ENTER** key to confirm the 'Off' time setting.
5. The setup screen will then revert to the **P1** 'On' time set up screen, at this point it is possible move to the **P2** segment by pressing the 'P' key.
6. If required **P2**, **P3** and **P4** segment can be set up using steps 1-4 above.
7. If it is not required to set up **P2**, **P3** and **P4** segment at this stage, continue to press the 'P' key until the heater reverts to the previous operational mode. Alternatively if no keys are pressed the programming mode will time out and revert to the previous operational mode.

*Note:* it is possible to overlap the on times of program blocks. In the event of an overlap the program with the highest temperature set point will take priority during the overlap period. Once the overlap period has expired the product will revert to the later program settings. If an overlap is present the display will indicate the current operational program and the off time of the final overlapping program.

## Remote Bluetooth Operation

The appliance can be controlled remotely using a smartphone or similar device. To facilitate this remote operation it is necessary to first download the Dimplex **Remote** app. The app is available on both android and IOS devices and is available free from the Apple or Android App store. The App is compatible with Android version 4.3 and above and IOS version 5 and above.

Once the App has been downloaded it is necessary to pair the appliance with the smartphone to complete the remote setup. Please follow the steps shown below:

1. Launch the Dimplex **Remote** app on the smartphone or similar device.
2. To initiate pairing mode on the appliance press and hold the 'M' button for two seconds. The LCD screen will go blank with the exception of the Bluetooth  logo flashing in the bottom right hand corner, See **Fig.10**. This indicates that the device is advertising to be paired with the **Remote** app.
3. On the smart phone the appliance should now be visible on the pairing screen, this will be a unique 6 digit code but will always start with EC, for example 'ECBC17'. Select this device and press connect to initiate pairing.
4. Once the pairing process is complete the app can be used to control the appliance.
5. Once paired successfully the Bluetooth logo will stop flashing and the Bluetooth neon will be illuminated.

## Safety in use

This appliance incorporates a number of safety devices. In addition to the **'Important Safety Advice'** section your attention is drawn to the following;

### Tilt Switch

The tilt switch will prevent the heater from working if it is accidentally tipped over on its side. If the radiator is tipped over while it is hot, disconnect the power and allow it to cool, then stand the radiator back upright. Reconnect the power - normal operation should be resumed.

### Safety Overheat Protection

For your safety this appliance is fitted with a thermal cut-out. In the event that the product overheats for some reason, the cut-out prevents excessive temperatures on the product by cutting the power to the heater. Once the heater has cooled down, it will reset automatically, it will continue to cycle on and off automatically until the reason for overheating is removed.

### Storage

If the heater is not required for long periods, for example during the summer, it should be stored in a dry place and preferably covered to prevent the accumulation of dirt and dust. The supply cord should be neatly coiled around the cable wrap and the plug stored in the cable wrap moulding.

### Cleaning

**WARNING - ALWAYS DISCONNECT THE POWER SUPPLY BEFORE CLEANING THE HEATER.**

Do not use detergents, abrasive cleaning powder or polish of any kind on the body of the heater.

Allow the heater to cool, then wipe with a dry cloth to remove dust and a damp cloth (not wet) to clean off stains. Be careful not to allow moisture in to the heater.

## Recycling



For electrical products sold within the European Community.

At the end of the electrical products useful life it should not be disposed of with household waste.

Please recycle where facilities exist. Check with your Local Authority or retailer for recycling advice in your country.

## After Sales Service and Guarantee terms and conditions

Your product is guaranteed for 3 years from the date of purchase. The 3 year guarantee is extended for an additional 2 years when you register the product with Dimplex, within 28 days of purchase. If you do not register the product with Dimplex within 28 days, your product will remain guaranteed for 3 years only. If you experience a problem with our Dimplex product, which is found to be defective due to faulty materials or workmanship within the Guarantee Period, this Dimplex Guarantee will cover repair or - at the discretion of Dimplex- replacement with a functionally equivalent Dimplex product.

Within the guarantee period we undertake to repair or exchange this product free of charge providing:

a) Proof of purchase such as a sales receipt should be provided, showing that the appliance was bought within the 36-months (+24 months if successfully registered) prior to registering the defect/fault.

b) The appliance was correctly installed and operated in accordance with the manufacturer's instructions and used solely for domestic purposes.

c) The defect/fault was not as a result of accident, misuse, unauthorised modification or inexpert repair

Your rights under this guarantee are additional to your statutory rights, which in turn are not affected by this guarantee.

To validate your extended guarantee register with us online at: <http://register.dimplex.co.uk>

N.B. Each qualifying product needs to be registered with Dimplex individually.

**Please note that the extended guarantee is only available in the UK and Ireland.**

If after following these steps your product still does not operate you should return it to your point of purchase. Please do not return a faulty product to us as this may result in loss or damage and delay in providing you with a satisfactory service.

Please retain your receipt as proof of purchase.

## What is not covered by a Dimplex Guarantee?

The Dimplex Guarantee does not cover any of the following: Any fault or damage to your Dimplex product due to faulty materials or workmanship occurring outside the Guarantee Period.

Normal wear and tear including parts that might wear out over time or consumables, such as [filters].

Any fault or damage occurring to any pre-owned Dimplex product or to any other equipment or property.

Accidental damage to your Dimplex product or damage to your Dimplex product from external sources (for example, transit, weather, electrical outages or power surges).

Fault or damage to your Dimplex product which is:

- not due to faulty materials or workmanship or which is due to circumstances outside Dimplex's control.
- caused by use of your Dimplex product for anything other than normal domestic household purposes in the country where it was purchased.
- caused by any misuse, abuse or negligent use of the Dimplex product, including but not limited to any failure to use it in accordance with the Operating Instructions supplied with the product.

- caused by any failure to assemble, install clean and maintain your Dimplex product in accordance with the Operating Instructions supplied with the product unless this was carried out by Dimplex or its authorised dealers.
- caused by repairs or alterations to your Dimplex product not carried out by Dimplex service personnel or its authorised dealer(s).

## Terms and Conditions

The Dimplex Guarantee is valid for 3 calendar years, plus 2 if registered, from the date of purchase of your Dimplex product from a recognised retailer in the country of purchase and use, or the date of delivery of the product if later, always provided the original receipt has been retained and is produced as proof of purchase.

You must provide to Dimplex or its authorised agents on request the original receipt as proof of purchase and - if required by Dimplex - proof of delivery. If you are unable to provide this documentation, you will be required to pay for any repair work required.

Any repair work under the Dimplex Guarantee will be carried out by Dimplex or its authorised dealer(s) and any parts that are replaced will become the property of Dimplex. Any repairs performed under the Dimplex Guarantee will not extend the Guarantee Period.

Any replacement of your Dimplex product by Dimplex during the Guarantee Period will start the 5 year Guarantee Period afresh from the date of delivery of the replacement Dimplex product to you. (\*Please keep original online guarantee registration email and sales receipt for your original purchase as proof of the additional 2 years, in case of the unlikely event you experience an issue).

The Dimplex Guarantee does not entitle you to recovery of any indirect or consequential loss or damage including but not limited to loss or damage to any other property.

The Dimplex Guarantee is in addition to your statutory rights as a consumer and your statutory rights are not affected by this Dimplex Guarantee.

## Contact Dimplex

If you have any questions about what the Dimplex Guarantee covers and does not cover or how to claim under the Dimplex Guarantee, please contact us:

GDC Group LTD, Millbrook House, Grange Drive, Hedge End, Southampton SO30 2DF

Telephone: 0844 879 3588

Email: [customer.services@gdcgroup.co.uk](mailto:customer.services@gdcgroup.co.uk)

Visit: [www.gdcgroup.co.uk](http://www.gdcgroup.co.uk)