

AC3CN Recessed Ceiling Heater / Over Door Heater



---

**IMPORTANT: THESE INSTRUCTIONS SHOULD BE READ CAREFULLY AND RETAINED FOR FUTURE REFERENCE**

---

**IMPORTANT SAFETY ADVICE**

**DO NOT COVER OR OBSTRUCT the air inlet or outlet grille.**

**ENSURE THE APPLIANCE IS EARTHED.**

Do not use this heater in areas where excessive dust exists.

This heater must not be located immediately above or below a fixed socket outlet or connection box.

Always disconnect supply before working on the product.

This product should be mounted safely to solid wall or ceiling surfaces only.

Ensure the supply cables are of adequate current carrying capacity and are protected by a suitable fuse.

If the appliance is mounted in a toilet or washroom, the appliance should be mounted such that no part of it can be touched by a person using a fixed bath or shower.

If the appliance is mounted in a toilet or washroom an isolating switch must be provided outside the washroom adjacent to the entrance door.

This appliance can be used by children aged from 8 years and above and persons with reduced physical, sensory or mental capabilities or lack of experience and knowledge if they have been given supervision or instruction concerning use of the appliance in a safe way and understand the hazards involved. Children shall not play with the appliance. Cleaning and user maintenance shall not be made by children without supervision.

Children of less than 3 years should be kept away unless continuously supervised. Children aged from 3 years and less than 8 years shall only switch on/off the appliance provided that it has been placed or installed in its intended normal operating position and they have been given supervision or instruction concerning use of the appliance in a safe way and understand the hazards involved. Children aged from 3 years and less than 8 years shall not plug in, regulate and clean the appliance or perform user maintenance.

**CAUTION — Some parts of this product can become very hot and cause burns. Particular attention has** to be given where children and vulnerable people are present.

This heater is not equipped with a device to control the room temperature. Do not use this heater in small rooms when they are occupied by persons not capable of leaving the room on their own, unless constant supervision is provided.

**DO NOT COVER OR OBSTRUCT the air inlet/outlet ceiling grille.**

A minimum distance of 1.5 metres must be observed between the ceiling grille and any furniture, combustible material or furnishings.

This appliance must not be installed less than 1.8 metres above the floor.

**WARNING: ENSURE THIS PRODUCT IS EARTHED.**

A suitable isolator to the fixed wiring of the premises must be provided adjacent to the final position of the Switch Panel. An Isolator must be fitted close to the heater to allow for servicing

This product must not be subjected to water spray or immersion and should be mounted such that no part of it can be touched by a person using a fixed bath or shower.

This product should be mounted safely into ceiling areas only.

The ceiling can be either of a plasterboard (or similar) construction, or of suspended ceiling tiles.  
DO NOT store or use any flammable materials or sprays in the vicinity of the heater – FIRE HAZARD.  
DO NOT insert any foreign objects into the heater openings.  
Risk of injury, electric shock or damage to the heater may occur.  
Ensure proper manual handling procedures are observed at all times.

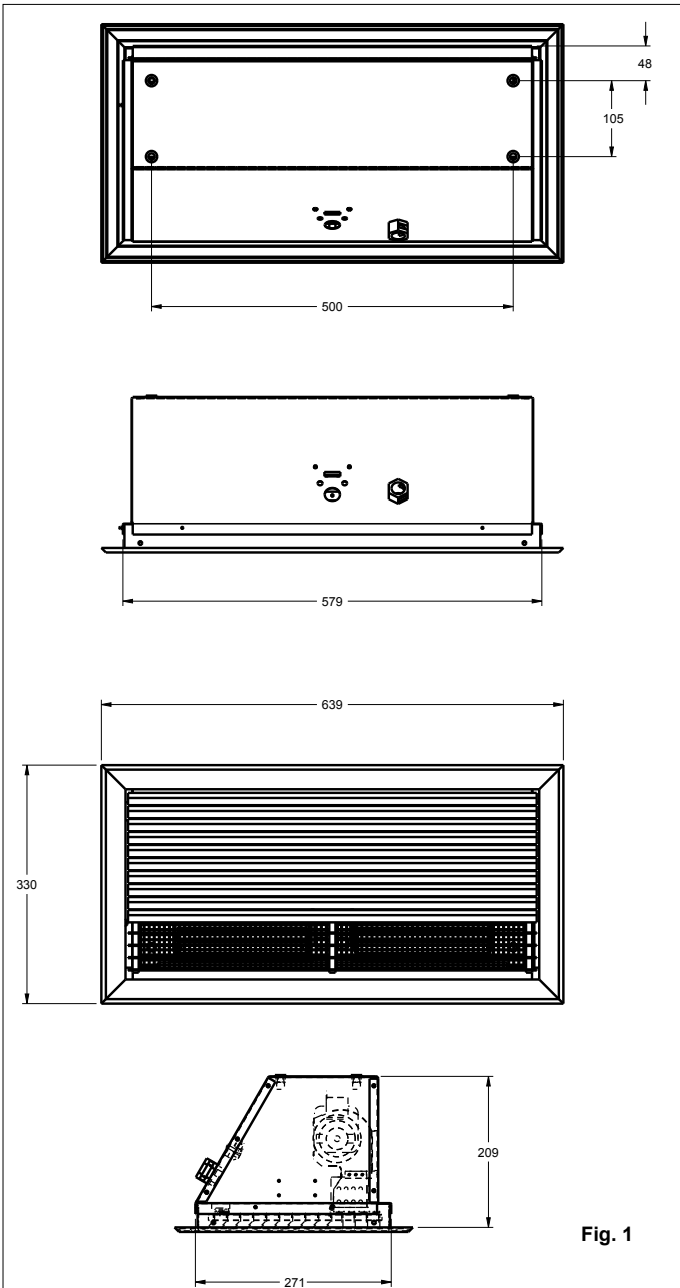


**ATTENTION: IN ORDER TO  
AVOID OVERHEATING DO  
NOT COVER.**

# Recessed Ceiling Heater / Over Door Heater

## Model: AC3CN

Model	Loading (kW)	Current (amps)	Voltage (volts)	Weight (kg)
AC3CN	3	13	~ 230-240	8.7



### General

The carton contains: -

- 1 x AC3CN heater
- 1 x Switch box

This Recessed Ceiling Heater / Over Door Heater is a robust heater intended for installation into a suspended or plasterboard ceiling.

For optimum results, do not install this product in ceilings higher than 3 metres. If multiple heaters are installed, generous spacing should be provided between heaters to achieve an even heating distribution.

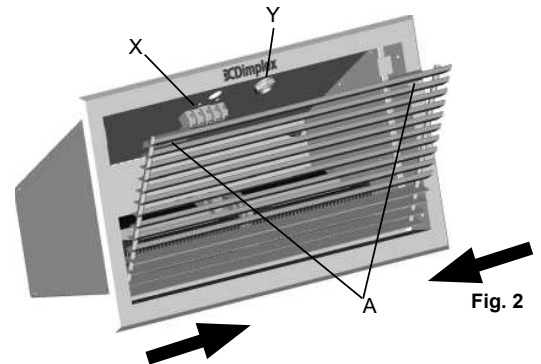
### Electrical Connection

The Electrical connection of this product should be carried out by a competent electrician and be in accordance with the current IEE wiring regulations.

A suitable local isolating switch must be provided in the electrical supply circuit with at least 3mm clearance on each pole.

### Connection of Heater

Gain access to the terminal block (see 'x' in Fig. 2) by unlocking the grill by moving the two slides in the direction of the arrows (see 'A' in Fig. 2) as shown using a small screwdriver or other suitable tool. Open the grill and feed the appropriate cable through the cable gland (see 'Y' in Fig. 2).

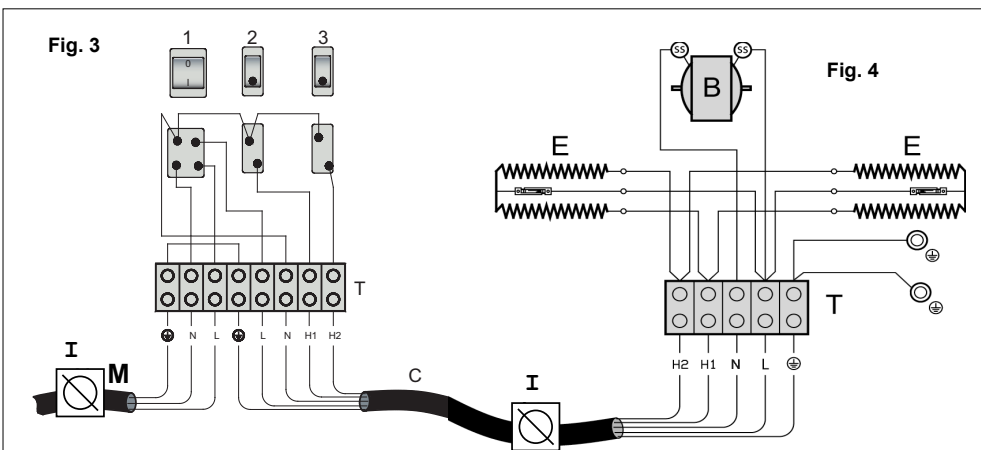


**WARNING:** Ensure power cable path does not come into contact with internal heater elements or fans.

Make connections as per wiring Diagram (see Fig. 3) and close the grille.

### Connection of Switch Panel

The mains electrical supply cable and power cable to this heater (neither supplied) should be connected as per the wiring diagram shown in Fig. 4 (see Fig. 5 for Switch No.'s).

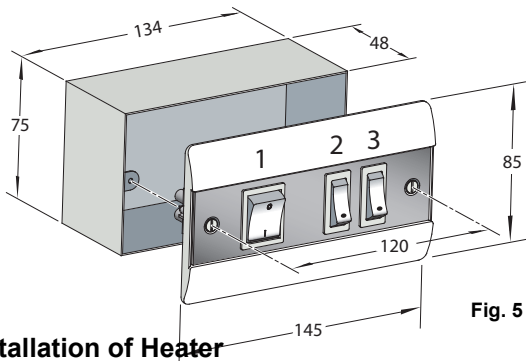


### Label Description

- |   |   |
|---|---|
| 1 | ON - OFF (Double Pole Switch)                                   |
| 2 | HALF HEAT (Single Pole Switch)                                  |
| 3 | SECOND HALF HEAT (Single Pole Switch)                           |
| T | TERMINAL BLOCK  |
| M | MAINS IN POWER CABLE (NOT SUPPLIED)                             |
| B | BLOWER MOTOR  |
| E | HEATER ELEMENT  |
| T | TERMINAL BLOCK  |
| C | POWER CABLE FROM SWITCH PANEL TO HEATER (5 core - NOT SUPPLIED) |
| I | Isolators   |
- \* Test all switch settings once installation is complete \*

### Installation of Switch Panel

**WARNING:** The Switch Panel should not be installed in a toilet or washroom. The backing box (standard B.S. double gang as shown in **Fig. 5**) should be fixed to a suitable wall. Suitable wall conduit should be used where applicable to carry the cable between the heater and the switch panel. A suitable recessed wall box may be substituted, as an alternative.



**Fig. 5**

**Installation of Heater**

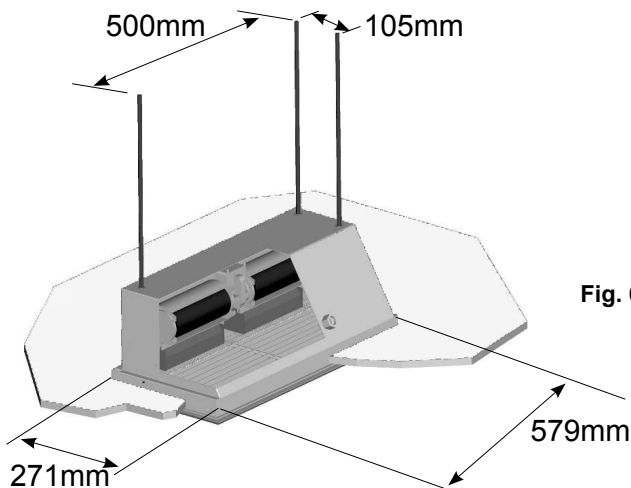
The Installation of this product must only be carried out by a prescribed competent person in accordance with Building Regulations and the current IEE Wiring Regulations for electrical equipment.

This heater can either be installed into a suspended or plasterboard ceiling. First it is necessary to ensure that there is sufficient space above the ceiling for the Installation of this product (see **Fig. 1** and **Fig. 7**).

This product is designed to be suspended by threaded rod or wires/chains. Always ensure this unit is adequately supported when installed.

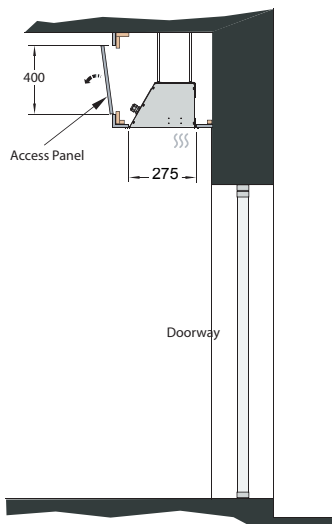
**Installation in a Ceiling**

A hole as indicated in **Fig. 1** and **Fig. 6** must be cut into the ceiling. Allow an additional amount for clearance. It may be necessary to fix an internal supporting frame around the newly cut aperture in a plasterboard ceiling or suspended ceiling.



**Fig. 6**

To mount the unit into the ceiling void, use lengths of threaded bar or hooks (not supplied) screwed into the M8 threaded inserts located in the top side of the heater (see **Fig. 1** for dimensions). Adjust the height of the heater so the inner edge of the grill surround is flush with the ceiling.



**Fig. 7**

**Installation in a Bulk Head (over doorway)**

A hole (579x271mm) as indicated in **Fig. 7**, must be cut into the ceiling part of the bulk head. Drop rods should be used to mount the appliance in such a position, as to have the base flush with the ceiling. An access panel should also be provided on the front of the bulkhead. This provides access to the top of the appliance and cable entry point. Access for wiring the appliance is via the grille.

**Operation of Switch Panel**

Switch on electrical supply (MAINS IN)

to the Switch Panel.

Switching the switch marked '1' (see '1' in **Fig. 5**) energises the fan and switches on the electrical supply to the heater.

The heat selection switches allow heat settings to be chosen as shown below:

- Settings -**
- I ● ● ● Fan Only
  - I + ● ● Fan + 1/2 Heat
  - I + ● ● ● Fan + Full Heat

The desired setting can be obtained through switch selection.

**WARNING** This heater is not equipped with a device to control the room temperature. Do not use this heater in small rooms when they are occupied by persons not capable of leaving the room on their own, unless constant supervision is provided.

This appliance is not intended for use by persons (including children) with reduced physical, sensory or mental capabilities, or lack of experience and knowledge, unless they have been given supervision or instruction concerning use of the appliance by a person responsible for their safety.

**Children should be supervised to ensure that they do not play with the appliance.**

## Thermal Safety cut-out(s)

The power supply to the heating elements will be interrupted if one or a combination of the following abnormal events occur:

1. Air inlet/outlet panel is obstructed.
2. Internal ventilation is impaired due to build up of dust and fluff.
3. Blower unit stalls.

**Note :** If the cut-out operates, the heater must be turned off immediately to avoid damage to the heater. Please follow the 'Procedure for resetting cut-out(s)' explained below.

## Procedure for resetting cut-out(s)

Establish the cause and eliminate the fault.

Reset the thermal cut-out(s), located behind the air outlet (for detail view see Fig. 11).

Press the black reset button (see 'g' in Fig. 11) on the side of the cut-out (see 'f' in Fig. 11) as described in steps 2 - 4 :-

### Steps to reset cut-out(s)

1. Disconnect the power supply.
2. Pass small flat head screwdriver through air inlet/outlet panel 'B' to button side of the cut-out (see 'g' in Fig. 11) avoiding contact with the element (see 'e' in Fig. 11).
3. Press the reset button in direction shown in Fig. 11 to reset the cut-out. (cut-out clicks when reset)
4. Remove the screwdriver carefully.
5. Turn on the supply.

If the cut-out continues to operate, the heater should be switched off and an engineer called.

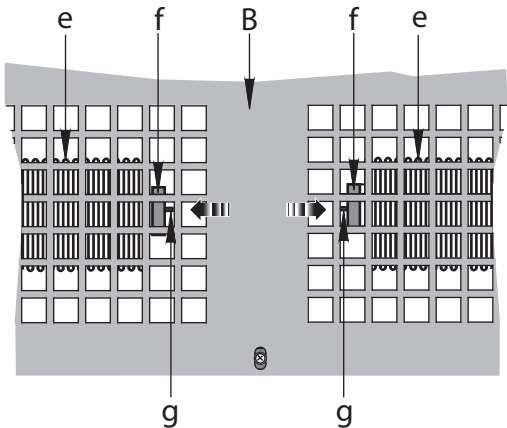


Fig. 11

## Maintenance

**WARNING: ALWAYS DISCONNECT HEATER FROM THE POWER SUPPLY BEFORE ATTEMPTING ANY MAINTENANCE.**

The heater should be serviced annually. Any dust or debris should be removed from the grille and elements, taking care not to damage the elements.

## Cleaning the Heater & Switch Panel

External and grille appearance can be maintained by occasionally vacuuming and wiping with a light duster. External appearance of the switch panel can be maintained by wiping occasionally with a duster or for stain removal, a weak soap solution can be applied with a cloth and the surface wiped dry.

**Note: Care must be taken to avoid any moisture ingress into the switch panel.**

## After Sales Service

Your product is guaranteed for one year from the date of purchase.

Within this period, we undertake to repair or exchange this product free of charge provided it has been installed and operated in accordance with these instructions.

Your rights under this guarantee are additional to your statutory rights, which in turn are not affected by this guarantee.

Should you require after sales information or assistance with this product please go to [www.dimplex.co.uk](http://www.dimplex.co.uk) where you will find our self help guide by clicking on "After Sales" or ring our helpdesk on the number shown on the rear of this booklet.

Please retain your receipt as proof of purchase.



---

DIMPLEX  
MILLBROOK HOUSE  
GRANGE DRIVE  
HEDGE END  
SOUTHAMPTON  
SO30 2DF

TEL: 0844 879 3587  
FAX: 0844 879 3582  
WEBSITE: [www.dimplex.co.uk](http://www.dimplex.co.uk)  
Republic of Ireland Tel. 01 8424833