

# Architectural Air Curtains 3m

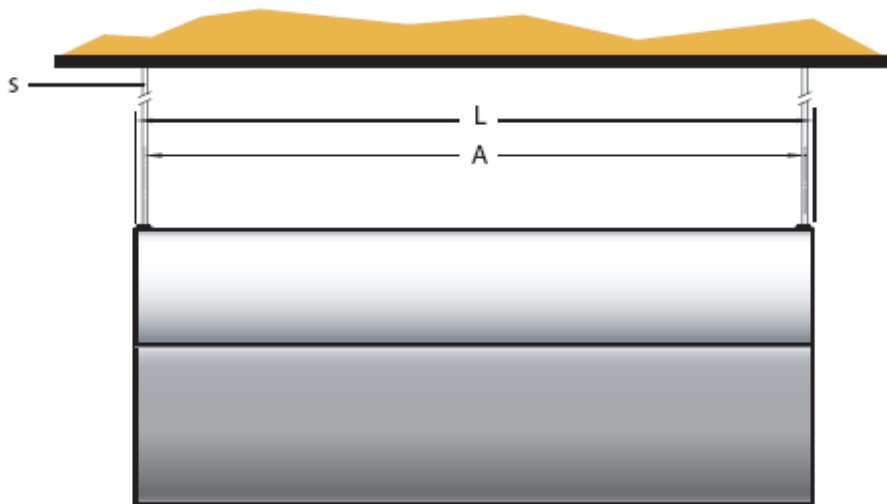
## LPHW Standard Output Coil

Model	ARC10W	ARC15W	ARC20W
<b>Air Side</b>			
Airstream Width	1m	1.5m	2m
Max Mounting Height / Max Air Throw (Vertical)	3.0m	3.0m	3.0m
Max Air Volume (m <sup>3</sup> /h) (High/Low)	2500 / 1700	3000 / 2000	5000 / 3400
Max Air Velocity (m/s) (High/Low)	9.0 / 6.0	9.0 / 6.0	9.0 / 6.0
Noise level @ 3m (High / Low) dB (A)	55 / 51	55 / 51	57 / 53
Fans Power @ (230V~ 1PN) (kW)	0.4	0.56	0.8
Fans Current @ (230V ~ 1PN) (A)	1.74	2.43	3.48
<b>Water Side</b>			
<b>Entering Air Temp (°C)</b>	<b>15.0</b>	<b>15.0</b>	<b>15.0</b>
Leaving Air Temp (°C)	35.0	35.0	35.0
Heating Capacity @ 90°C / 70°C (kW)*	17	17	34
Water Pressure Drop (kPa)	2.5	4.1	2.4
Water Flow Rate (l/s)	0.21	0.252	0.42
Heating Capacity @ 82°C / 71°C (kW)*	17	20	34
Water Pressure Drop (kPa)	6.8	12.0	7.0
Water Flow Rate (l/s)	0.38	0.46	0.76
Heating Capacity @ 80°C / 60°C (kW)*	17	17	34
Water Pressure Drop (kPa)	2.6	4.2	2.5
Water Flow Rate (l/s)	0.21	0.252	0.42
Water Connections	3/4" bsp	3/4" bsp	1" bsp
<b>General</b>			
Blower(s)	Tangential x 2	Tangential x 2	Tangential x 4
Coil	Copper corrugated / Finned Coil		
Controls	Electronic with interfaces for door sensors, thermostats & BMS/BEMS control. Supplied with wall controls connected via low voltage LAN cable.		
Dimensions (W x H x D) (cm)	115 x 45 x 36	165 x 45 x 36	220 x 45 x 36
Grille dims (l/let, O/let) (W x H) (cm)	107 x 21 / 107 x 11	157 x 21 / 157 x 11	204 x 21 / 204 x 11
Electric Supply	230V ~ 1PN	230V ~ 1PN	230V ~ 1PN
Weight (kg)	65	95	130

# Architectural Air Curtains 3m

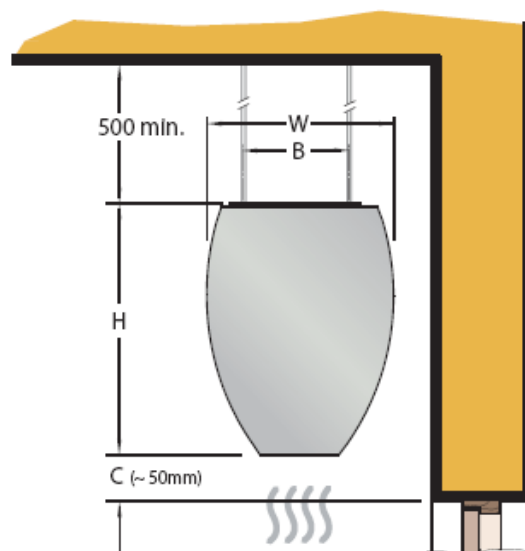
LPHW Standard Output Coil

## Product Dimensions—Facing (Horizontal)



	L	W	H	A	B
ARC10 E/W/WLT/A	1150	390	450	1110	175
ARC15 E/W/WLT/A	1650	390	450	1610	175
ARC20 E/W/WLT/A	2200	390	450	2160	175

## Product Dimensions—Side (Horizontal)



# Architectural Air Curtains 3m

## LPHW Standard Output Coil

### Vertical Mounting Foot & Top Tether

