

Dimplex Air Curtain - Single Phase Conversion Kit - CAB1PN Suitable for use with the CAB10E, CAB15E & DAB10E (Surface & Recessed)

08/19538/0 Issue 5

THESE INSTRUCTIONS SHOULD BE READ CAREFULLY AND RETAINED FOR FUTURE REFERENCE

IMPORTANT SAFETY ADVICE

ENSURE THE APPLIANCE IS EARTHED.

This work should only be carried out by a competent electrician.

Always disconnect the supply before working on the product.

Ensure the supply cables are of adequate current carrying capacity and are protected by a suitable fuse.

Ensure all wiring is fixed clear of all moving parts and heat sources.

This kit is **not** designed for use with DAB15 models.

This conversion kit consists of:

- 8 x 100mm x 2.5mm tie wraps
- 4 x Moss Plastic tie wrap clips
- 2 x Neutral link cable
- 1 x Live link cable

The instructions for the conversion kit should be read in conjunction with the 'Dimplex Air Curtain' Instructions. All 'Safety Advice' to be heeded before fitting this kit.

General

The CAB10E, CAB15E and DAB10E are primarily designed for 400V~ 3P&N 50Hz operation, however in the instance where it is not possible to utilise a 3-phase supply, the units can be de-rated to a ½ heat setting for operation via a 230V~ 1P&N 50Hz supply.

Procedure

1. remove the outlet grille assemblies and, where necessary, the bottom panel and inlet grille to gain access to the element banks and terminal blocks as shown in Fig. 1 below.

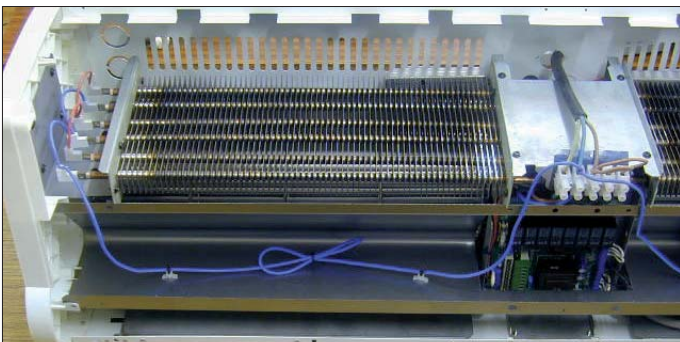
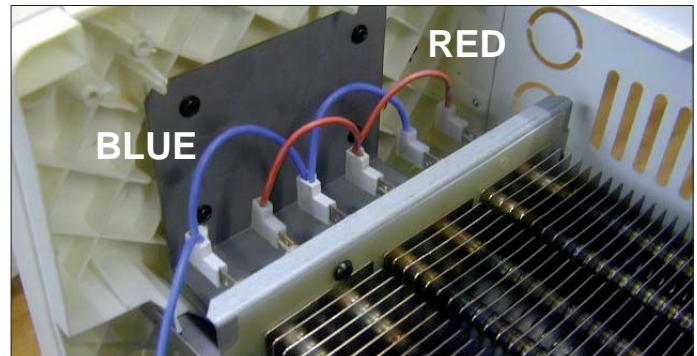


Figure 1.

2. Remove the first half heat (H1) star connection link cable from both sides of each element bank (Fig. 2 shows the bottom red (H1)) star connection link cable replaced with the supplied neutral star connection link cable.



3. Fix the push on clips (two on either side) to the inside of the pressure plate as shown in Fig. 1 (the supplied push on clips are a press fit into their fixing holes (ø3.5mm)). Proceed to attach the neutral star link connection cable to the push on clips using the tie wraps as shown in Fig. 3 below.

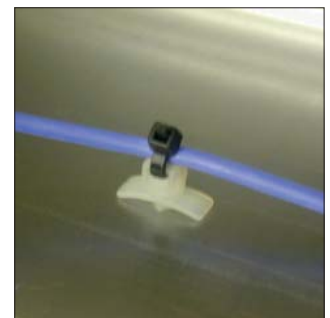


Figure 3.

Note: Due to extra cable length (for CAB15E) it is necessary to loop the slack cable in the pressure plate and secure it using a supplied tie wrap as shown in Fig. 1.

4. Connect the brass ferrule end of the neutral link cable into the N of the terminal block (along with the Neutral of the single phase supply) as shown in Fig. 4.

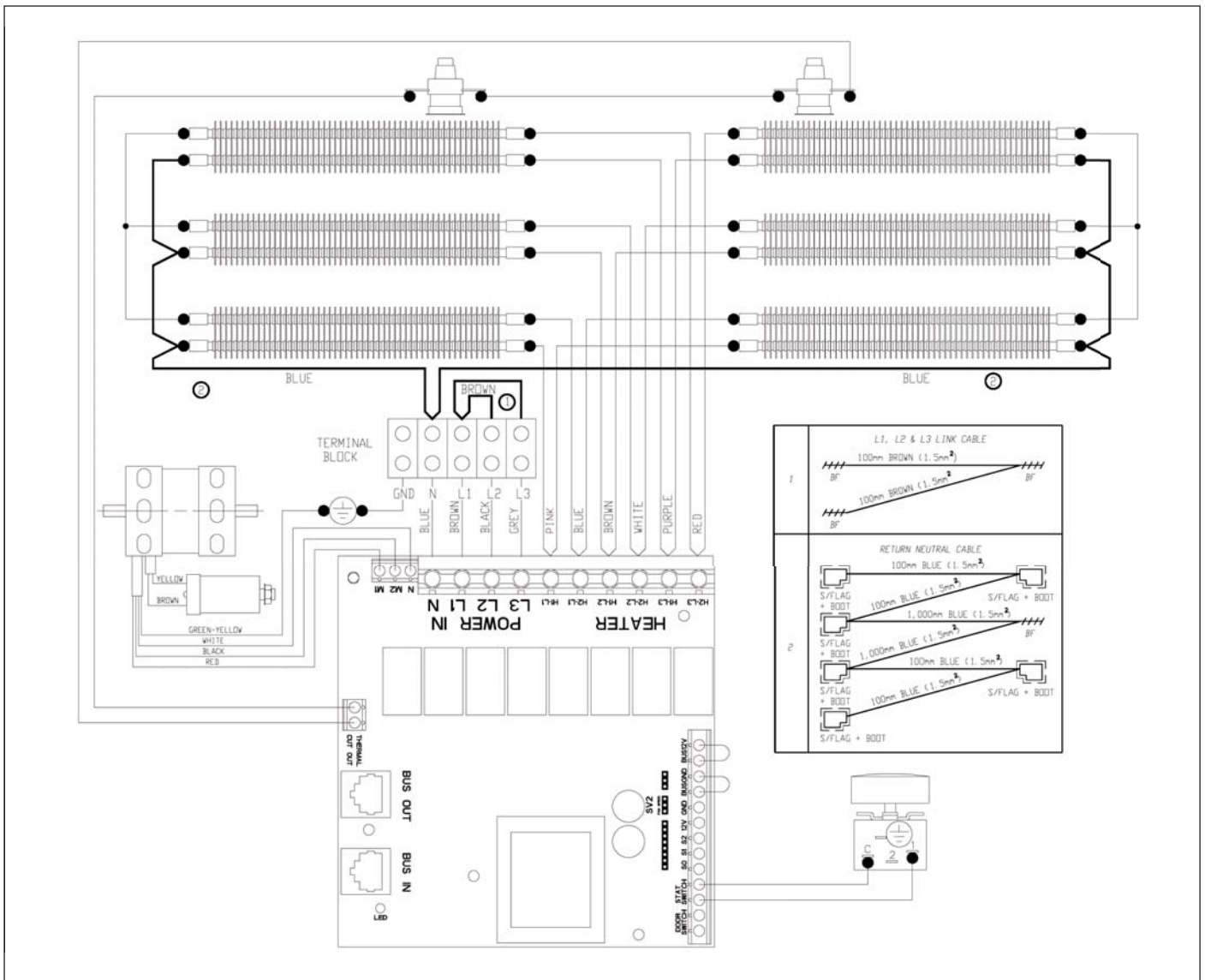
5. Also shown in Fig. 4 is the supplied (brown) Live link cable, this should be linked from L1 (with connection of Live from single phase supply) to L2 & L3.

The earth cable is connected as normal within the terminal block (ensure the supply cable is fixed appropriately within the back panel using the correct sized gland).



Figure 4.

6. Check all switch settings operate, as stated within the evaluation table (overleaf). Note: H2 should still be connected (as per remote switch connection instruction manual) even though it will not be utilised (this still allows a ½ heat setting when switched to full heat rather than no heat at all).



Once the above loadings and switch settings have been confirmed as acceptable, proceed to replace the grille assemblies, and where necessary, the bottom panel. For reference purposes a full wiring schematic is detailed above.

Single Phase Settings Table		CAB10E	CAB15E	DAB10E
Heat/Fan setting	Heat/Fan result	L1 Amps	L1 Amps	L1 Amps
Half heat - Half fan	Half heat - Half fan	19.8	27.9	27
Full heat - Half Fan	Half Heat - Half fan	20	29.9	27.8
Half heat - Full fan	Half heat - Full fan	20	29.9	27.8
Full heat - Full fan	Half heat - Full fan	20	29.9	27.8

Please retain your receipt as proof of purchase.



This product complies with European Safety Standard EN 60335-2-30, and European Standards EN 55014, EN 60555-2 and EN60555-3 for Electromagnetic Compatibility. These cover the essential requirements of the EEC Directives 2006/95/EC and 2004/108/EC.



Dimplex,
Millbrook House,
Grange Drive,
Hedge End,
Southampton, SO30 2DF.

Tel:
Fax:
Web-site
Republic of Ireland

0844 879 3588
0844 879 3583
www.dimplex.co.uk
01 842 4833