

Contact Details

Please note that some of the contact details on this PDF document may not be current.

Please use the following details if you need to contact us:

Telephone: 0844 879 3588

Email: customer.services@gdcgroup.co.uk

The customer support section of our website also features a wide range of information which may be of use to you and is available 24 hours a day. It includes:

- Operating and installation instructions
- Easy 'How to use' guides for storage heaters
- Service and repairs
- Where to buy our products
- Literature downloads
- Heating requirement calculator

Visit - www.dimplex.co.uk/support

Dimplex Air Curtain - Single Phase Conversion Kit - CAB1PN Suitable for use with the CAB10E, CAB15E & DAB10E (Surface & Recessed)

08/19538/0 Issue 4

THESE INSTRUCTIONS SHOULD BE READ CAREFULLY AND RETAINED FOR FUTURE REFERENCE

IMPORTANT SAFETY ADVICE

ENSURE THE APPLIANCE IS EARTHED.

This work should only be carried out by a competent electrician.

Always disconnect the supply before working on the product.

Ensure the supply cables are of adequate current carrying capacity and are protected by a suitable fuse.

Ensure all wiring is fixed clear of all moving parts and heat sources.

This kit is **not** designed for use with DAB15 models.

This conversion kit consists of:

- 8 x 100mm x 2.5mm tie wraps
- 4 x Moss Plastic tie wrap clips
- 2 x Neutral link cable
- 1 x Live link cable

The instructions for the conversion kit should be read in conjunction with the 'Dimplex Air Curtain' Instructions. All 'Safety Advice' to be heeded before fitting this kit.

General

The CAB10E, CAB15E and DAB10E are primarily designed for 400V~ 3P&N 50Hz operation, however in the instance where it is not possible to utilise a 3-phase supply, the units can be de-rated to a ½ heat setting for operation via a 230V~ 1P&N 50Hz supply.

Procedure

1. remove the outlet grille assemblies and, where necessary, the bottom panel and inlet grille to gain access to the element banks and terminal blocks as shown in Fig. 1 below.

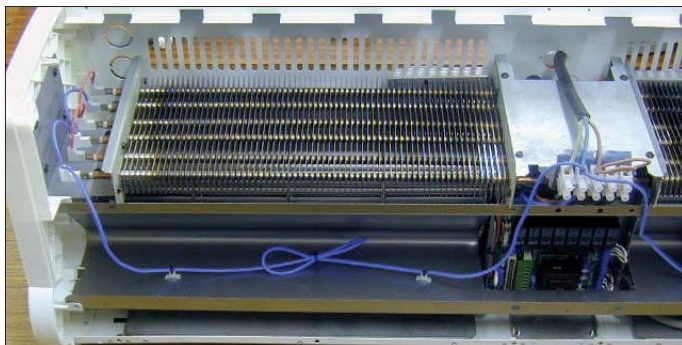
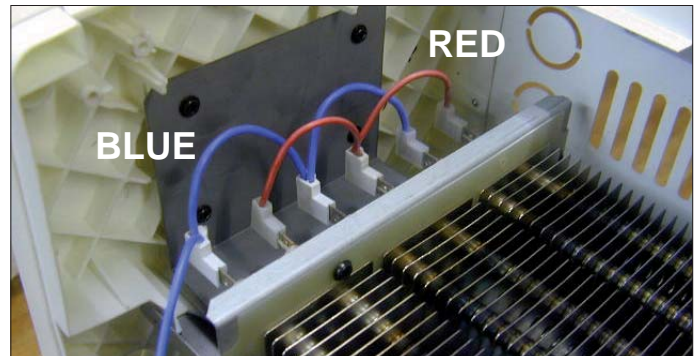


Figure 1.

2. Remove the first half heat (H1) star connection link cable from both sides of each element bank (Fig. 2 shows the bottom red (H1)) star connection link cable replaced with the supplied neutral star connection link cable.



3. Fix the push on clips (two on either side) to the inside of the pressure plate as shown in Fig. 1 (the supplied push on clips are a press fit into their fixing holes (ø3.5mm)). Proceed to attach the neutral star link connection cable to the push on clips using the tie wraps as shown in Fig. 3 below.

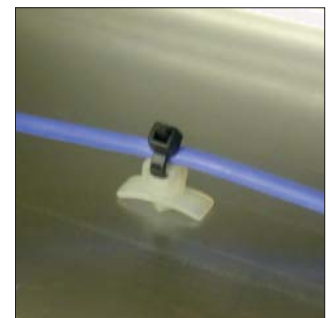


Figure 3.

Note: Due to extra cable length (for CAB15E) it is necessary to loop the slack cable in the pressure plate and secure it using a supplied tie wrap as shown in Fig. 1.

4. Connect the brass ferrule end of the neutral link cable into the N of the terminal block (along with the Neutral of the single phase supply) as shown in Fig. 4.

5. Also shown in Fig. 4 is the supplied (brown) Live link cable, this should be linked from L1 (with connection of Live from single phase supply) to L2 & L3.

The earth cable is connected as normal within the terminal block (ensure the supply cable is fixed appropriately within the back panel using the correct sized gland).

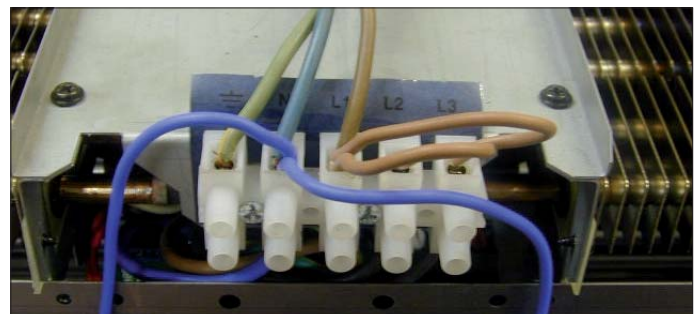


Figure 4.

6. Check all switch settings operate, as stated within the evaluation table (overleaf). Note: H2 should still be connected (as per remote switch connection instruction manual) even though it will not be utilised (this still allows a ½ heat setting when switched to full heat rather than no heat at all).

