

Contact Details

Please note that some of the contact details on this PDF document may not be current.

Please use the following details if you need to contact us:

Telephone: 0844 879 3588

Email: customer.services@gdcgroup.co.uk

The customer support section of our website also features a wide range of information which may be of use to you and is available 24 hours a day. It includes:

- Operating and installation instructions
- Easy 'How to use' guides for storage heaters
- Service and repairs
- Where to buy our products
- Literature downloads
- Heating requirement calculator

Visit - www.dimplex.co.uk/support

Quick Start Guide

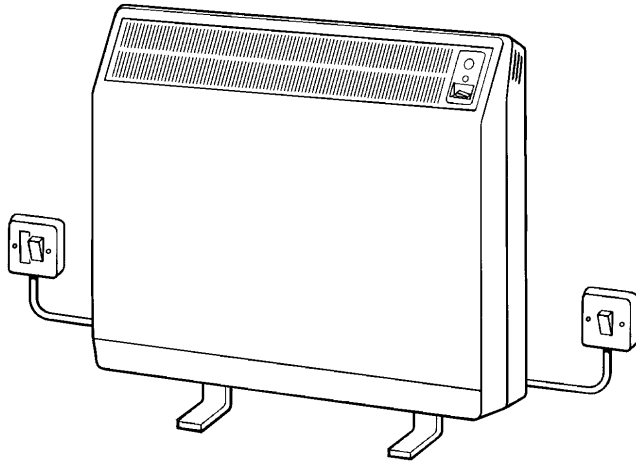
CXLS Combined Storage and Convector Heater



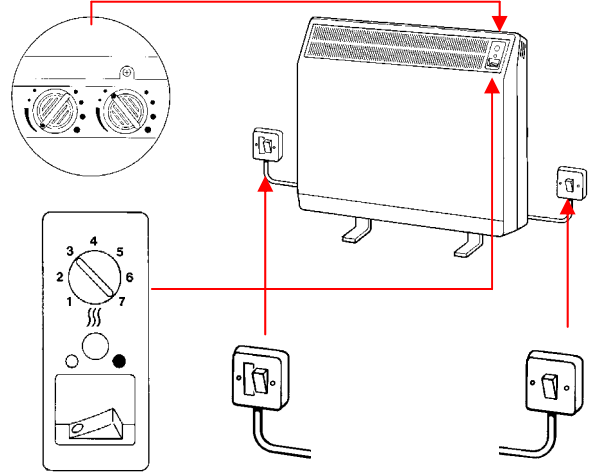
QS004

This guide is for quick reference only. Refer to CXLS installation and operating instructions for further information

CXLS storage heater



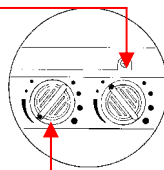
Control positions



Heater controls

Input control — controls the temperature of the heater

Adjust control for the first few days until your ideal room temperature is found, then leave on this setting. The heater will automatically adjust for changing weather conditions.*



Boost control — controls the amount of heat given later in the day

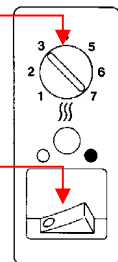
Normally leave boost setting at minimum. Turn up if more heat is required later in the day. Leaving the control on a higher setting will provide automatic boost each day.

Convector boost heat setting

Thermostat control to select your chosen comfort level.

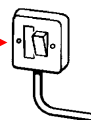
Convector boost on/off switch

Switch it on if top up heat is required. Neon light shows when boost is selected.



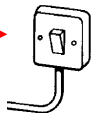
Convector on/off switch

Leave on



Storage on/off switch

Leave on for heating season



WARNING: Walls, curtains and furniture should be at least 75mm away from the top and sides of the heater. Furniture and other obstructions should be at least 150mm from the front of the heater. **DO NOT COVER** or obstruct the air inlet or outlet grilles. **PLEASE REFER TO THE OPERATING AND INSTALLATION INSTRUCTIONS FOR FURTHER SAFETY ADVICE.**

* **NOTE:** Changes to the input control setting will not come in to affect until the next period of off peak (cheap rate) electricity is available. If you are unsure when your off peak supply is available, contact your electricity provider.