

# Q-Rad Electric Radiator Quick Start Guide



8/53085/0 ISSUE 0

This guide is for quick reference only. Please refer to the Instructions for further information.

- DO NOT COVER THE HEATER. Do not place material or garments on the heater or obstruct the air circulation around the heater. Doing so could create a fire hazard.
- Ensure that both supply switch next to the heater are turned on. During the summer when no heat is required the wall switch can be turned off.
- CAUTION, some parts of this product can become very hot and could cause burns. Particular attention has to be given where children and vulnerable people are present.
- Care and consideration must be taken when using this heater central controller or any other device that switches on the heat automatically, since a fire risk exists when the heater is accidentally covered and then turned on remotely.

## How Does the Heater Control Work?

The control allows you to choose when you want heat and at what temperature.

When using a timer mode (see below), **Comfort On** will display on the home screen to tell you that the heater is maintaining the temperature displayed. **Comfort Off** will display when the heater is outside of a timed heating period.

In **Manual, Eco** or **Frost** mode the heater will always maintain the temperature shown on the home screen.

## Set the Time

To set the date and time on the heater, press **Menu**, then press the **Enter** with **Time / Date** highlighted. Press  $\wedge$  or  $\vee$  until the correct value is shown, then press **Enter** to confirm and move on to the next value. Repeat until all details are correct, and **Set** displays, then press **Back**.

## Set the Temperature

The temperature shown on the display is the chosen room temperature. This is the temperature that the heater will maintain during heating periods. If the room temperature is above this temperature then the heater will not operate. The heater leaves the factory with this temperature set at 21°C which represents a typical, comfortable room temperature. If you require a different room temperature then press either  $\wedge$  or  $\vee$  on the home screen.

## Timer Modes

Your heater has four timer modes. These show the times that The heater will operate in **Comfort On** mode.

Please turn over for more information on using timer modes.

Timer Mode	Description
Out All Day	6 hours heating per day in two periods
Home All Day	9 hours heating per day in one period
Holiday	Set the number of days for which you are on holiday
User Timer	Customise times in four periods

## Which Timer Mode is Best for Me?

The heater leaves the factory set in **Out All Day** mode. If you are out during the day and only require heat in the mornings and evenings then this mode will suit your lifestyle and you won't need to alter anything. If you are in during the day then you should select the **Home All Day** mode which is a single heating period. The times shown in these modes can be changed. If you are away for an extended period then you can use the **Holiday** mode. This will reduce the heating when you are away, going back to the previous mode on the day you return.

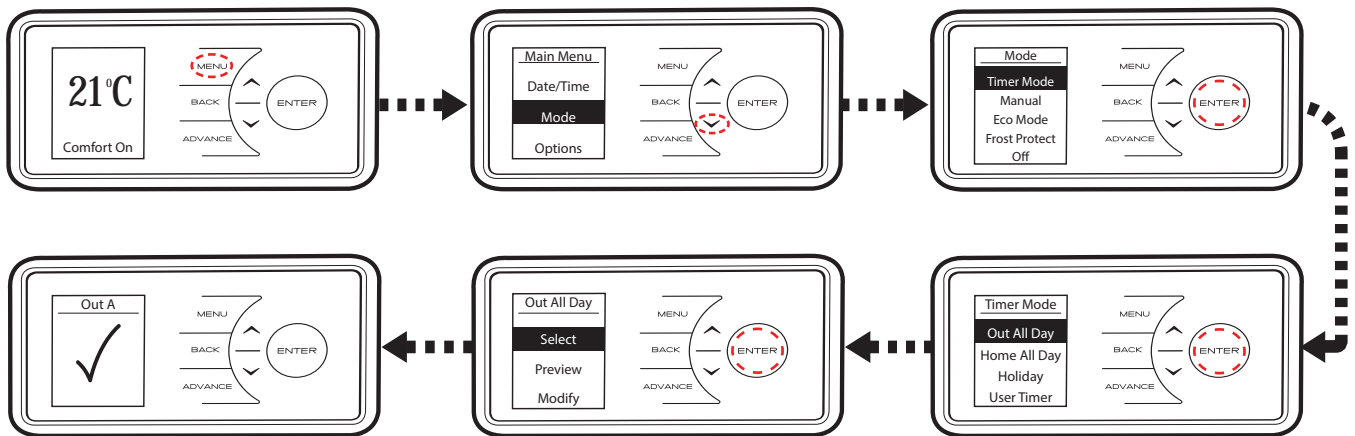
To choose a timer mode press **Menu** then press **Enter** to select **Mode** then press **ENTER** to select **Timer Mode**. Select the mode required by pressing **^** or **v** then **Enter**. For options **Out All Day**, **Home All Day** and **User Timer**, three choices are available - **Select**, **Preview** and **Modify**.

**Select** - Choose this timer option

**Preview** - View the times currently set

**Modify** - Change the times currently set

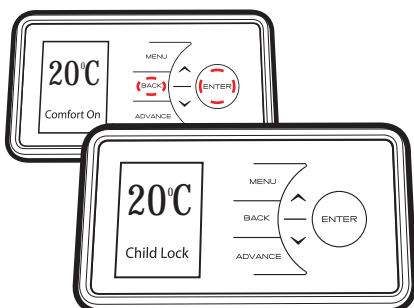
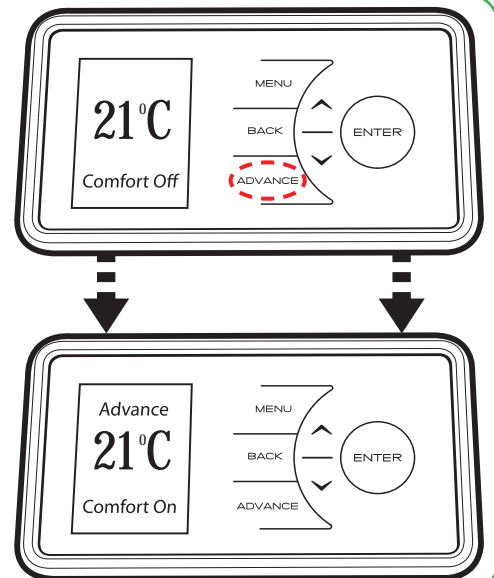
(Please refer to the instructions for information on how to modify the programmed times)



## Advance

Sometimes you may be at home when you had not planned to be, or need to leave when you had planned to have the heating on. You can change the way you use your heating temporarily, this temporary change is achieved by using the **Advance** function.

The **Advance** function allows you to begin the next **Comfort** period early. If the heater is in a **Comfort Off** period and you want heat – press the **Advance** button. If the heater is in **Comfort On** and you don't want heat, press the **Advance** button. This will override the timer until the start of the next comfort period.



## Child Lock

You can lock the controls so that the settings cannot be changed. To lock the controls press and hold both **Back** and **Enter** for three seconds. **Child Lock** will appear at the bottom of the screen. To unlock the control repeat this action.