

Contact Details

Please note that some of the contact details on this PDF document may not be current.

Please use the following details if you need to contact us:

Telephone: 0844 879 3588

Email: customer.services@gdcgroup.co.uk

The customer support section of our website also features a wide range of information which may be of use to you and is available 24 hours a day. It includes:

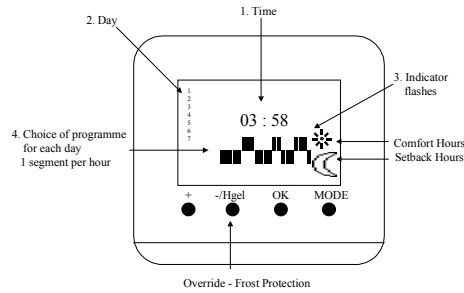
- Operating and installation instructions
- Easy 'How to use' guides for storage heaters
- Service and repairs
- Where to buy our products
- Literature downloads
- Heating requirement calculator

Visit - www.dimplex.co.uk/support

Mains Signalling Transmitter - Model No. RX9912

CE T9909/010/A

Display



General Description

The RX9912 can only be used in RPX, EVX and EVS heaters.

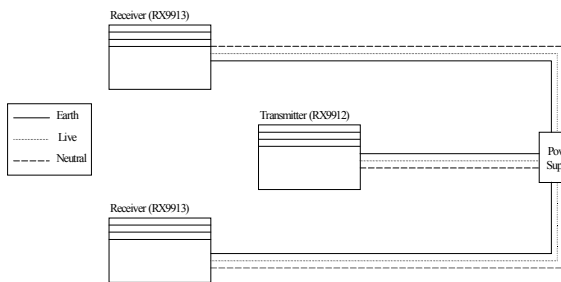
Each programmer may be used to provide single or multi zone programming for up to 20 slave heaters, each fitted with a mains signalling receiver (Dimplex Part No. RX9913).

Two heating positions are offered: comfort and economy setback, with room temperatures set using the controls on the heater. A choice of heating programmes are available for each day of the week. There are 7 pre-set programmes, from P1 to P7 or a customised programme P=. In the event of a power supply interruption or the cassette being removed from the heater, the memory will retain current time and customised programme for 1 hour. The seven pre-set programmes will remain stored indefinitely.

Installation

The RX9912 is rated at 230V.

- Using a narrow bladed screwdriver, carefully release the cover from the slot adjacent to the controls on the heater
- Insert the programmer fully so that it clicks into position
- Turn the control knob on the heater(s) to the PROG position

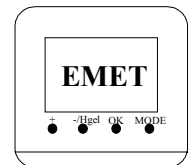


The heater containing the RX9912 is the transmitter or master heater, which sends a message to the slave heaters, each containing the RX9913 receivers. The transmitter heater determines the programme and heating levels for all the heaters (Comfort, Setback and Frost Protection), but the actual comfort and setback temperatures should still be set on each individual heater (see heater instructions). The transmitter heater will switch between comfort and setback according to the programme. On every slave heater, turn the control knob to PROG.

Single Zone Programming:

In this mode all slave heaters will operate on the same master programme.

- Insert the RX9912 into the master heater.
- Press **mode** for 5 seconds. The house factory set code appears.
- Press **mode** to confirm the house code - the number 1 will appear.
- Press **mode** to confirm Zone 1.
- During transmission the transmitter will flash EMET and the number 1 alternatively. Activate all heaters containing receiver following the instructions below (§ Activating the receivers).



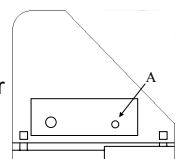
Multi Zone Programming:

It is possible to create up to 3 zones of heating using the RX9912 (One RX9912 per zone is needed).

- Insert the RX9912 into the master heater.
- Follow the instructions for creating a single zone, but at step 4 use the **+** key to select option of zone 2 or 3.
- Press **mode** to confirm OK when required zone is displayed.
- The screen will now flash EMET and the appropriate zone number.
- Activate all slave heaters containing receivers which you wish to be dedicated to either zone 2 or 3 by following the instructions below.

Activating the Receivers:

- Confirm the slave heater selector switch is positioned on PROG.
- Press the small button (A) for 10 seconds (using a small screwdriver blade or pen tip) until the neon indicator flashes.
- Release and press again, light indicator will be **ON**.
- Repeat process for each slave heater.
- Return to master heater programmer and press **OK**



Operating Instructions

The RX9912 can be programmed either inserted directly into the heater or out of the heater. If choosing the latter option, the cassette must be first left in the heater for 15 minutes to charge. Remember that the charge only lasts for one hour when the cassette is removed from the heater.

Setting the time:

00.00 flashes

1. Press the **mode** button once until hour flashes
2. Alter the hours with **+** or **-** sign and confirm **OK**
3. Alter the minutes with **+** or **-** sign and confirm **OK**
4. Alter the days with **+** or **-** sign and confirm **OK**

The black arrow marks the selected day (e.g. 1 = Monday, 2 = Tuesday etc).

Choosing the programmes:

Press **mode** twice (once for 2 seconds and once again briefly - P1 should flash) then with the **+** or **-** sign scroll through the preset programme choices P1 to P7 and P=. Select the programme for day 1 (Monday) by pressing **OK**. Follow this sequence for each day of the week.

For reference the preset programmes are shown on the card attached to the programmer.

To choose the customised programme select P=, press **mode** and change the temperature levels for every hour of the day by pressing **+** for comfort and **-** for setback. Then, after completing the 24 hours, confirm the day with **OK**.

The programmer will revert to the original display screen (time + day + current programme status) only after day 7 has received a programme.

Frost Protection/Holiday Setting:

The frost protection setting is continuous during the days it is set.

To set frost protection, press and hold the **-Hgel** button until "HG : 01" appears. If used as a group programmer all heaters will be set to frost protection. Press **+** or **-** to set the number of days required for frost protection (99 days maximum) e.g. "HG : 04" = 4 days. Press **OK** to confirm.

After the set frost protection period has elapsed, the heater automatically returns to the original programme.

To cancel frost protection before the end of the set period, press **-Hgel** to return to the registered programme.

Overriding the master programme:

When slave heaters are connected to a master, it is possible to manually override the master programme by turning the control button on each slave heater to the required position (comfort, setback, frost protection or off). To cancel the manual override and return to programmed operation, turn back to the PROG position.

Problem Solving

Display flashes and the timer cannot be adjusted: Exit the existing mode by pressing OK to return to the beginning.

Display Blank: Cassette has been out of the heater for more than an hour: Reinsert cassette into the heater for at least 15 minutes to charge (the charge lasts for one hour).

Fault Codes:

DEF 1: ram memory defect	replace programmer
DEF 2: EPROM ram memory defect	replace programmer
DEF 3: Bus CPL defect: electro-magnetic perturbation created by other electric equipment e.g. computers etc.	contact the installer
DEF 4: Transmitter defect: 2 transmitters having the same house code and zone numbers	check the zone numbers. (use instructions on receiver cassette)
DEF 5: Frost protection defect: frost protection has been set from zone 2 or 3 but there is no zone 1.	install transmitter in zone 1

Press **mode** and **OK** at once for one minute, to delete fault codes on the screen.

General Cleaning

BEFORE UNDERTAKING CLEANING WORK ON THE CONTROLLER OR APPLIANCE IMMEDIATELY DISCONNECT THE ELECTRICITY SUPPLY EITHER BY SWITCH OFF AT THE ADJACENT DOUBLE POLE SWITCH.

The outside of the appliance should be wiped over with a soft damp cloth and then dried. Do not use detergents or abrasives.

After Sales Service

Your Dimplex Control is guaranteed for one year from date of purchase. We undertake to exchange or repair free of charge within this period, any part found to be defective.

Should you require after sales service, please get in touch with the supplier through whom you purchased the appliance, or your nearest Service Agent. Please do not initially return a faulty appliance or part of an appliance to us as this may result in transit damage and/or delay in providing service. Let us know your difficulty quoting the model number and series of the appliance. We will then take the appropriate action.