
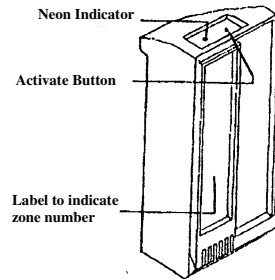


Receiver Cassette - Model No. RX9913

 Issue 2 08/13

Display



General Description

The RX9913 can be used in RPX, EPX, MFP, GFP and LPP heaters and with a master heater fitted with the Mains Signalling Transmitter (Part No. RX9912).

They operate by receiving a high frequency signal from the master heater transmitter (RX9912). During set up receivers are dedicated to only one transmitter so that they cannot be activated by signals from any other transmitter unit.

Installation

1. Using a narrow bladed screwdriver, carefully release the cover from the slot adjacent to the controls on the heater
2. Insert the receiver fully so that it clicks into position
3. Turn the control knob on the heater to the PROG position (RPX models only)

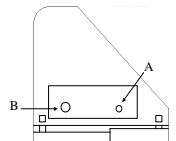
INSTALLER PLEASE NOTE:

Please mark clearly on the receiver label the number of the zone allocated, if used in a multi zone application. The RX9913 is rated at 230V.

Dedicating A Zone:

Firstly read the **Mains Signalling Transmitter** user instructions for operating with the receiver, following the steps listed under single or multi-zone programming.

1. When the master programmer starts to flash the EMET message and required zone number, press the small button (A) for 10 seconds until the indicator neon (B) flashes.
2. Release and press again, neon indicator will be **ON** continuously.



Setting Temperatures:

For heaters fitted with receivers, set the temperature controls in the normal way. (Refer to heater instructions).

Manual Override:

Turn the control button on the slave heater to the required position (comfort, setback, frost or off). To cancel override and return to programmed operation, turn back to the PROG position. (RPX models only)

Locking the receiver:

An extra screw is supplied to lock the receiver in place. Lock by piercing the prominent spur on the side of the heater casing until the screw enters a matching hole in the receiver.

General Cleaning

WARNING

BEFORE UNDERTAKING CLEANING WORK ON THE CONTROLLER OR APPLIANCE IMMEDIATELY DISCONNECT THE ELECTRICITY SUPPLY BY SWITCHING OFF AT THE ADJACENT DOUBLE POLE SWITCH.

The outside of the appliance should be wiped over with a soft damp cloth and then dried. Do not use detergents or abrasives.

After Sales Service

Your product is guaranteed for one year from the date of purchase. Within this period we undertake to repair or exchange this product free of charge provided it has been installed and operated in accordance with these instructions.

Your rights under this guarantee are additional to your statutory rights, which in turn are not affected by this guarantee. Should you require after sales information or assistance with this product please go to www.dimplex.co.uk where you will find our self help guide by clicking on "After Sales" or call our helpdesk on 0845 600 5111 (UK) or 01 842 4833 (R.O.I.).

Spare parts are also available on the website www.dimplex.co.uk

Please do not return a faulty product to us in the first instance. Please retain your receipt as proof of purchase.